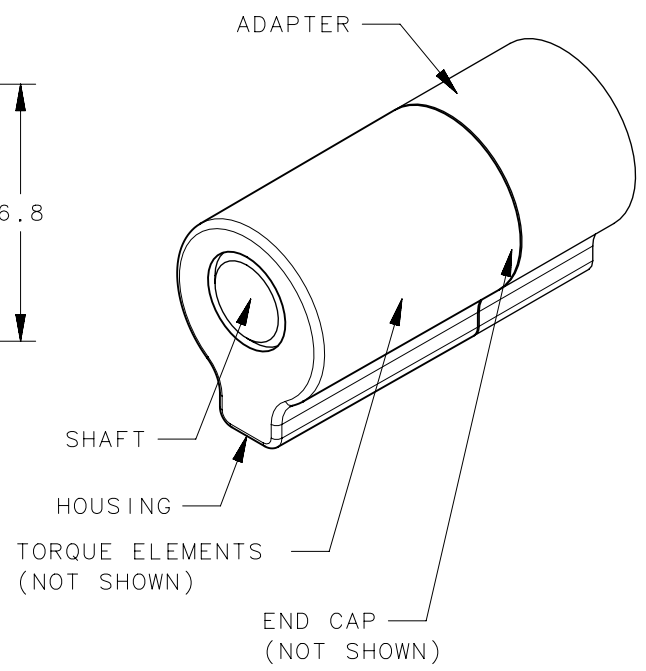
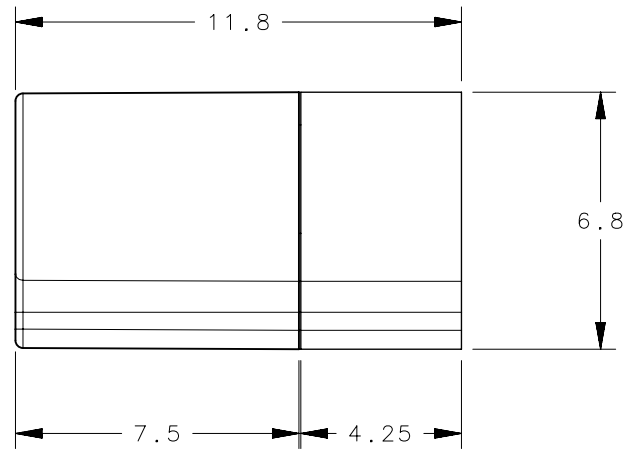
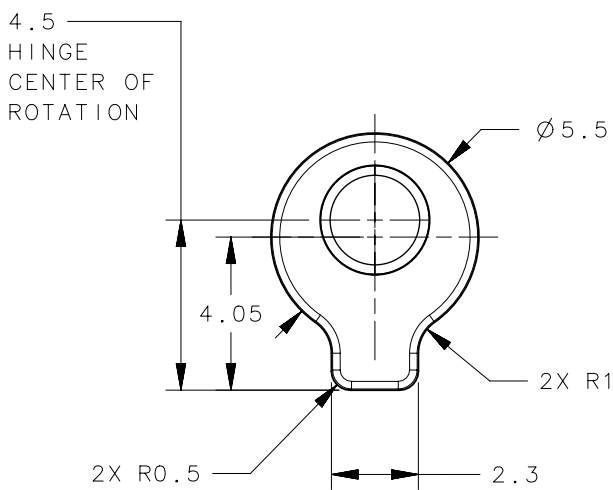
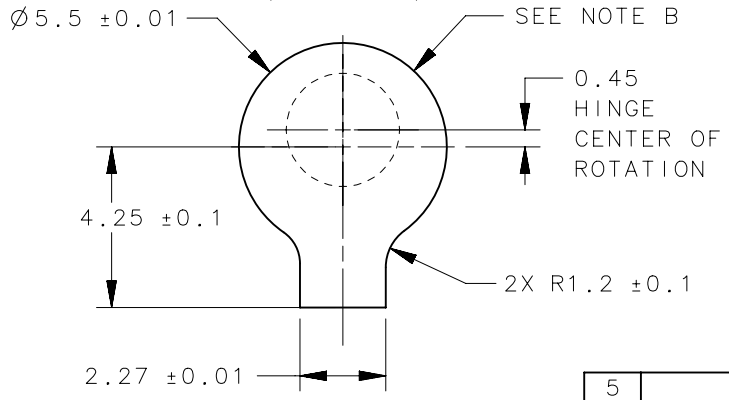


REVISION HISTORY			
REV	DATE	BY	DESCRIPTION
D	19NOV2015	CDW/MJS	PRN: P2015-2316



**PANEL PREPARATION (POLYMERS)**



MAXIMUM DRAFT: 0.5°  
 MAXIMUM DEPTH:  
 ADAPTER: 4.15  
 HOUSING: 7.40

PART NUMBER	STATIC TORQUE FORWARD/REVERSE (in-lbf) ±20%
ST-5A-10S-33	1.0
ST-5A-16S-33	1.6
ST-5A-23S-33	2.3
ST-5A-30S-33	3.0

5	-	PIN	STEEL	NATURAL	
4	-	HOUSING	ZINC ALLOY		
3	-	TORQUE ELEMENT	STEEL		
2	-	ADAPTER	ALUMINUM ALLOY		
1	-	CAP	ZINC ALLOY		
-	ST-5A-XXS-33	ASSEMBLY	-	-	SEE TABLE ABOVE FOR SPECIFIC PART NUMBER
NO.	PART NUMBER	TYPE OF COMPONENT	MATERIAL	FINISH	GENERAL NOTES

**NOTES:**

- A. RoHS COMPLIANT.
- B. FOR MOUNTING IN MATERIALS OTHER THAN POLYMERS CONTACT SOUTHCO FOR DETAILS.

THIRD ANGLE PROJECTION		 CONNECT • CREATE • INNOVATE			
MILLIMETERS [IN]					
SURFACE AREA		TOLERANCES UNLESS OTHERWISE NOTED		DESCRIPTION Hinge & Controlled Motion Device ST-5A HINGE ASSEMBLY	
VOLUME		ALL DIMENSIONS WITHOUT TOLERANCES ARE FOR REFERENCE ONLY.		SIZE A	SYSTEM NX
PROPRIETARY ITEM <small>EXCEPT FOR USES EXPRESSLY GRANTED IN WRITING, INFORMATION DISCLOSED HEREON IS CONFIDENTIAL AND ALL RIGHTS, PATENT AND OTHERWISE, ARE RESERVED BY SOUTHCO, INC.</small>		PER ASME Y14.5M-1994		DWG NO. J-ST-5A	
		DRAWN BY PG	DATE 07DEC10	SCALE 5:1	SHEET 1 OF 1